

Professional Learning

Communities:

A path to quality and collaboration
around SEL

BOOST Conference

May 3, 2018



Who's in the Room?

Raise your hand, if your role is:

- Front line staff (work directly with youth)
- Site Coordinator (oversee one site)
- Program Manager (oversee multiple sites)
- District Coordinator/Program Director (oversee the program overall)
- Technical Assistance Provider/Intermediary
- Funder
- Other?

Common Ground



Agenda

Welcome

Common ground

PCY's Expanded Learning 360/365

Practice change in districts

Exploring connections

Closing

Quality, Expanded Learning, and SEL

SEL is a foundational component of all youth development programs. In fact, **6** of the *Quality Standards for Expanded Learning in California* directly promote **3** core areas of SEL.

6
Quality
Standards



Safe & supportive
environment



Active &
engaged learning



Skill building



Youth voice
& leadership



Diversity, access,
& equity



Healthy choices
& behaviors

3
SEL
Areas

I know how I
am feeling

I can control
my own
behavior



WE ARE

Self-awareness
Self-management

I care about
other people's
feelings

I work well
with others



WE BELONG

Social awareness
Interpersonal skills

I can
overcome
challenges

The harder I
try, the better
I'll get

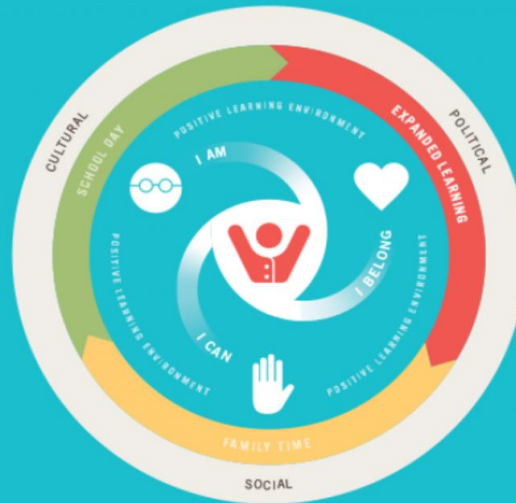


WE CAN

Self-efficacy
Growth mindset

Two Reports...

Student
Success
Comes
Full
Circle



Leveraging
Expanded
Learning
Opportunities



Finding Common Ground:
Connecting Social-Emotional Learning
During and Beyond the School Day

Expanded Learning 360°/365

Central Valley:

- Fresno
- Visalia



Northern:

- San Francisco
- Oakland
- San Rafael
- San Leandro
- Sacramento

Southern:

- Los Angeles
- Santa Ana

Expanded Learning 360°/365

Goal:

Improve SEL practice and alignment across school day and expanded learning programs

Strategies:

- Build on existing assets.
- Learn from on-the-ground experience.
- Attend to adult SEL skills and practices.

Expanded Learning 360°/365

Activities:

- Quarterly professional learning community (PLC)
- Action plans that define specific strategies
- Consulting support for action plan strategies
- Stipends to support travel and staff time
- Ongoing reflection and improvement

Participants:

- District teams, often including community partners
- Mixed teams of school day and expanded learning staff

District practices for SEL

- Develop a shared language
- Pilot SEL strategies and curricula
- Include SEL in district continuous improvement processes
- Participate in cross-sector professional development
- Implement district-level working groups



Los Angeles USD



Victor's points

Changed
practices/strategies

Visalia Unified School District

Ben's points

- Changed practices/strategies

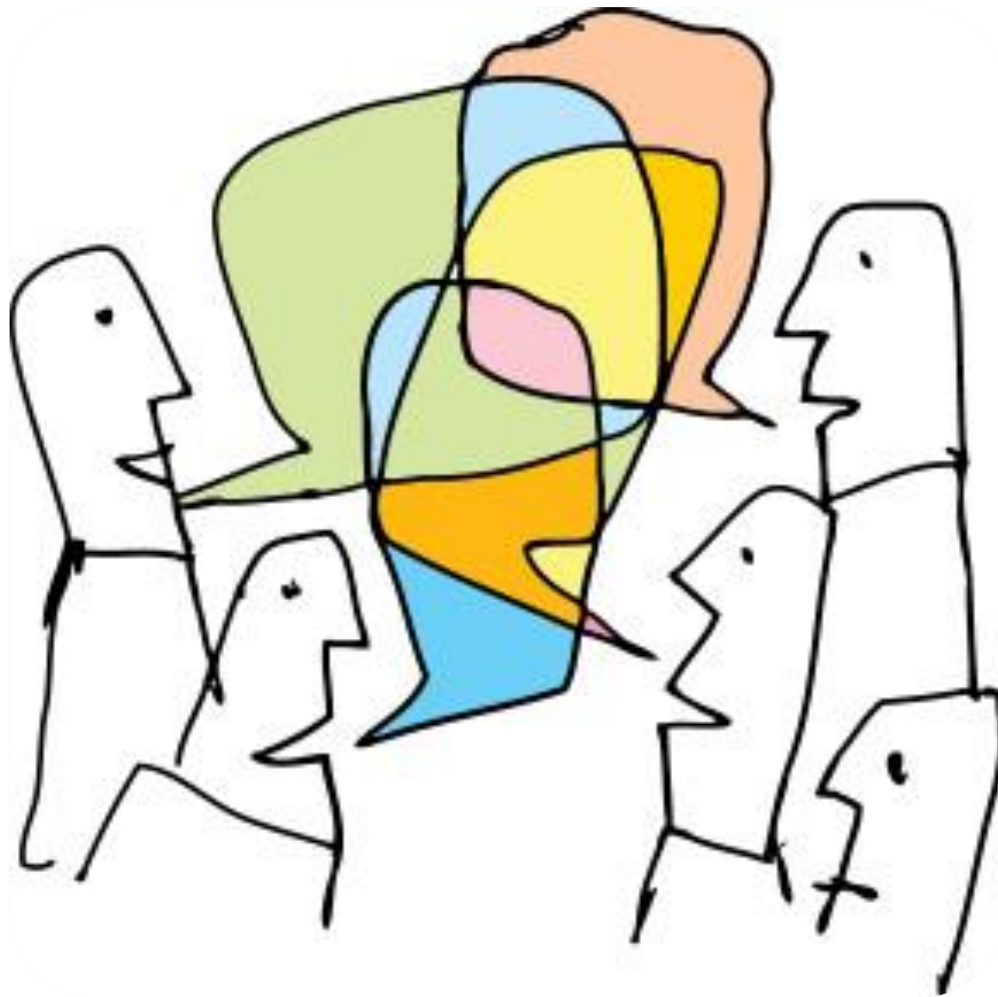


Triad Discussion



- What sparks your interest?
- How does this work relate to efforts you've been part of?
- What questions do you have?

Exploring Connections



Questions?



THANK YOU

