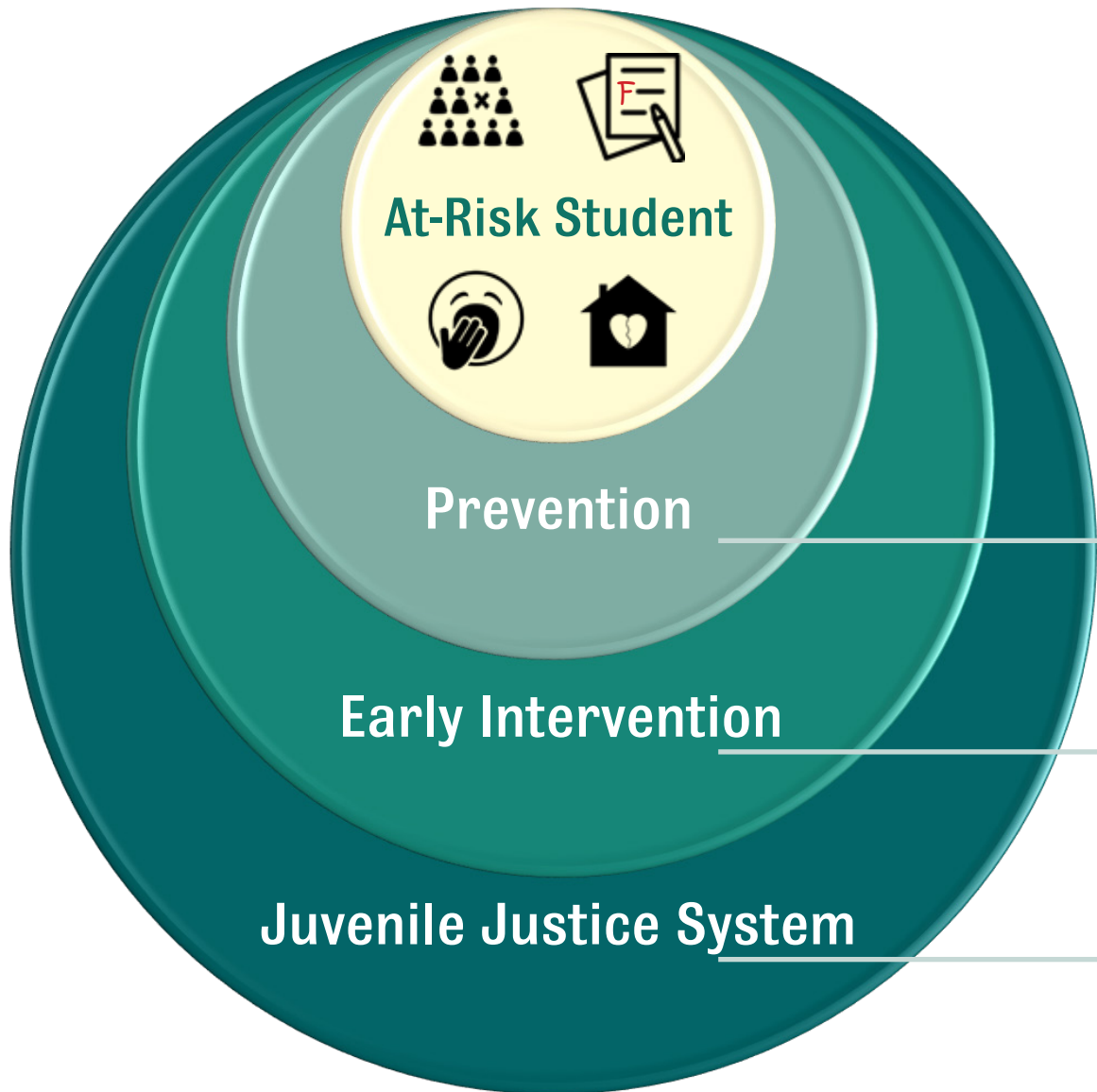


The Juvenile Justice Ecosystem



At-Risk Children and Youth may be identified by...

- Chronic Absenteeism
- Low Engagement in the Classroom
- Behavior Management Issues
- Low Achievement Scores
- Family and Home Issues

..as early as kindergarten

1st Tier Services - \$

- School District, including Behavior Intervention Teams (BIT)
- Family Involvement
- **Afterschool Programs**
*\$800/child/year, serving >14,000 children in 2016**
- Special Education Services: Individual Education Plan (IEP)
- Wrap-around services
- County Prevention Coalitions

2nd Tier Services - \$\$

- School District and Special Education Services: IEPs, BITs, etc.
- **Afterschool Programs**
- Wrap-around services
- County Prevention Coalitions
- Department of Family Services

3rd Tier Services - \$\$\$\$\$

- Department of Family Services
*\$9,660/child/year, serving 1855 children in 2016**
- County Prevention Coalitions
- County Youth Services
- Law Enforcement
- Court System
- Residential Facilities

Notes



Prevention and early intervention strategies are crucial to keeping at-risk children and youth out of the school-to-prison pipeline. As you go through this summit, we encourage you to think about your own or your organization's role and make notes on the outline below.

STRENGTHS



- What characteristics give you and/or your organization advantages in supporting students?
- What do we do to support students with Prevention and Early Intervention efforts?
- What in-kind or financial investments has your community made that support students?
-
-
-
-

CHALLENGES



- What characteristics give you and/or your organization disadvantages in supporting at-risk students
- What resources are lacking in your organization? (i.e. training, funding, etc.)
-
-
-
-

OPPORTUNITIES



- Can new stakeholder relationships be strengthened?
- Could a local afterschool program be leveraged?
- Can existing partnerships be strengthened?
-
-
-
-

THREATS



- What are the obstacles?
- Do external threats (funding, changing political climate, etc.) exist?
-
-
-
-

“At A Glance” Resource Guide



Afterschool programs provide valuable resources to children, families, and communities.

Here are a few ways that you can support children and youth in Wyoming:

1. Locate an afterschool program in your community.

Statewide Map: wyafterschoolalliance.org

2. Identify and contact resources or prevention coalitions in your community such as:

- Local DFS Office
- Public Health Nurses
- Americorps/VISTA - Volunteers in Service to America
- Mental Health Professionals
- Non-profits that Support and Serve Youth
- Local Juvenile Defenders

3. Make connections at your local school district and afterschool program including:

- School-based programs (those housed in school districts)
- Community-based non-profit afterschool and summer learning programs (Boys & Girls Clubs; YMCAs; Big Brothers Big Sisters; Parks and Recreation; etc)

4. Visit an afterschool program.

5. Contact the Wyoming Afterschool Alliance for assistance:

- Technical resources and training opportunities
- Current research and data on best practices for positive youth development
- Referrals, consultations and facilitation

6. Attend the WYAA State Conference - October 4-5, 2017, which focuses on Juvenile Justice.

7. Refer a family to enroll their child in an afterschool program.

8. Sign up for the WYAA list serve for up-to-date information and newsletters.